

**Inland Coalition  
on Aging**

# **Monthly Meeting**

**February 27, 2024**

[Inlandaging.org](http://Inlandaging.org)

# Agenda

---

**Welcome and Inland Coalition on Aging Board Introductions**

**Key Points from Last Meeting**

**Call to Action - California Department of Aging**

**Breakout Rooms**

**IE-MPA Updates**

**Awareness**

**Next Meeting**

**Post-meeting Poll**

# Inland Coalition on Aging Board

**Chair: Dr. Ben Jáuregui, DSW**, Manager, Integrated Transitional Care Team, Inland Empire Health Plan, Commissioner for the San Bernardino County Senior Affairs Commission.

**Secretary: Anna Swartz**, Human Resources, Community Access Center

**Treasurer: Carmen Estrada, MPA**, Executive Director, Inland Caregiver Resource Center

**Member: Glenda Jackson**, Assistant Director, San Bernardino County Department of Aging and Adult Services-Public Guardian

**Member: Jennifer de la Ossa-Ramirez**, Administrative Services Manager II, Riverside County Office on Aging



# Last ICA Meeting

---

**Ben Jauregui, DSW**

ICA Chair

# Key Points

---

**ICA Formed in 2008:** Previously IE-LTSS Coalition

**Vision:** A community where older adults, adults with disabilities, and caregivers age well.

**Current focus of ICA:** Creation of an Inland Empire Master Plan for Aging project

**Last meeting reviewed the findings for the domains:**

Caregiving, Transportation, Housing, Healthcare, Behavioral Health & Social Support, Alzheimer's and All other Dementia

"When discussing extending life, it's important to discuss quality of life"

# Key Points (cont.)

---

**Invitation to participate:** The ICA invited members to participate in the workgroups to help narrow down recommendations.

**Caregiving/Alzheimer's and Dementia workgroup interest: 24**

**Transportation workgroup interest: 7**

**Behavioral Health and Social Support workgroup interest: 21**

**Housing workgroup interest: 23**

# Special Guest: California Department of Aging

---

**Jackie Siukola Tompkins**, PhD,  
MPH, CPH, MCHES

Project Director, Master Plan for Aging  
Division of Policy, Research & Equity



# Building a California for all Ages and Abilities State and Local Master Plans for Aging

**Jackie Tompkins, PhD, MPH, CPH, MCHES®**

Project Director, Master Plan for Aging  
Division of Policy, Research & Equity  
California Department of Aging



# Advancing the CA's Master Plan for Aging



## What's New and Highlights!

- Third Master Plan for Aging Annual Report (PDF)
- Master Plan for Aging Budget Investments, Fiscal Years 20-24 (PDF)
- 2023 – 2024 Master Plan for Aging Initiatives (PDF)
- Master Plan for Aging Implementation Tracker

**Master Plan for Aging webpage:**

<https://mpa.aging.ca.gov/>

# MPA Goal Highlights

## **Goal One: Housing for All Ages & Stages**

- Building Capacity for Housing and Services and Preventing Homelessness

## **Goal Two: Health Reimagined**

- Expanding Health Care Affordability and Access
- Investing in Alzheimer's Early Intervention

## **Goal 3: Inclusion & Equity, Not Isolation**

- \$50 million for Older Adult Behavioral Health

## **Goal 4: Caregiving That Works**

- IHSS Career Pathways Training and Stipends

## **Goal 5: Affording Aging**

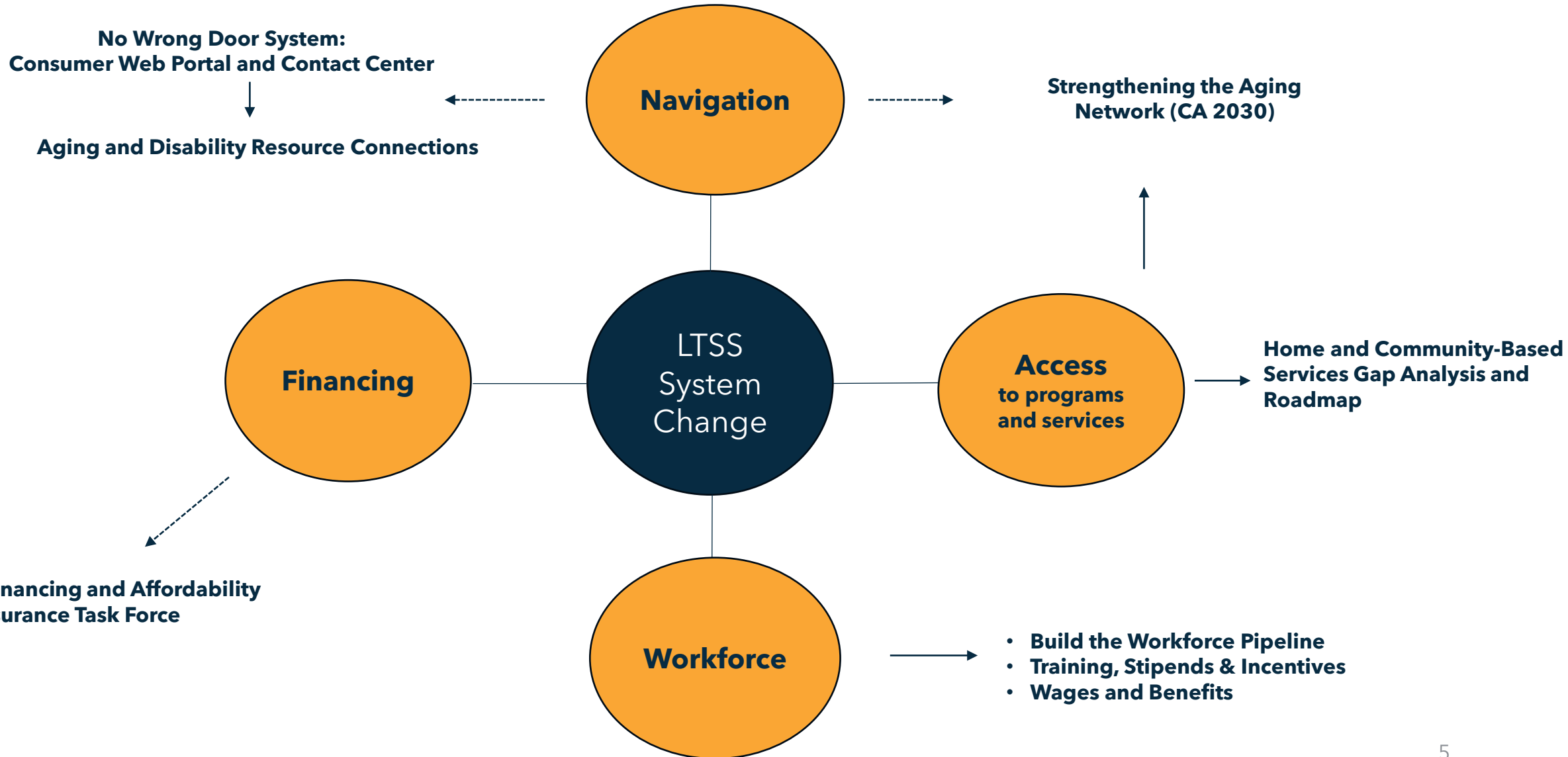
- Record Investments in Senior Nutrition



# MPA Initiative Highlights

- **MPA Initiative:** Assess community living and LTSS needs of LGBTQIA+ older adults. (Resource: [Survey](#)).
- **MPA Initiative:** Revisit California's Area Aging on Agency local leadership structures to meet growing and changing needs and continue to advance equity. (Resources: [CA2030](#), a [CalHHS program priority](#))
- **MPA Initiative:** Address the housing needs of older adults and people with disabilities by promoting statewide access to integrated models. (Resource: [Housing and Services Partnership Accelerator Initiative](#) )
- **MPA Initiative:** California's No Wrong Door (NWD) State Leadership Council to guide the development of the State's NWD system.

# LTSS System Change in the MPA











**FY 2020 - 2024**  
**\$9.5B in investments supporting**  
**older adults, people with**  
**disabilities, and caregivers**



# MPA Implementation Tracker Available

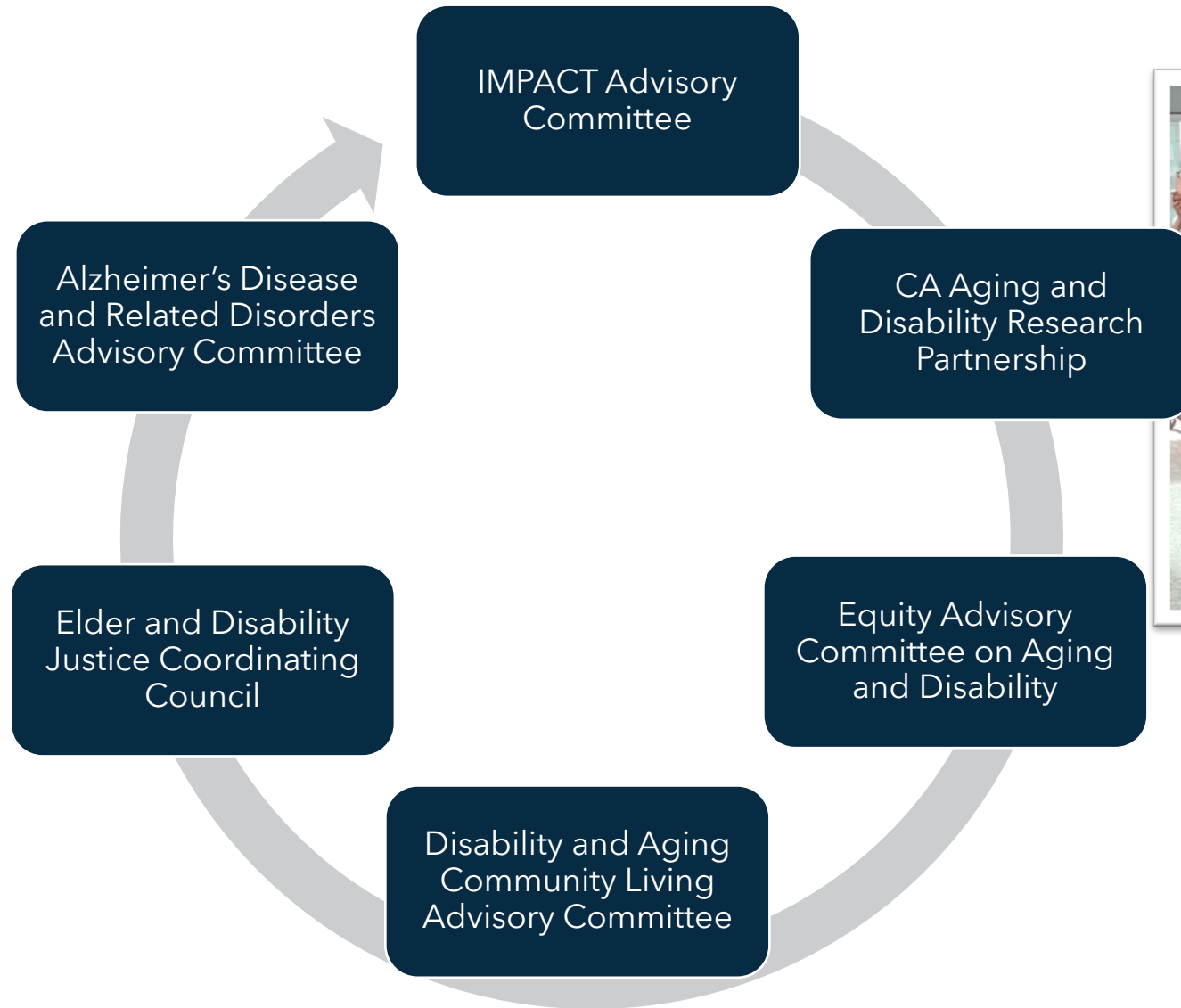
	GOAL ↕	STRATEGY ↕	INITIATIVE ↕		YEAR ↕	
	goal 5	strategy C	initiative 95	Engage with the U.S. Department of Agriculture and Congress to ensure, at a minimum, the same...	2023 - 2024	▼
	goal 5	strategy C	initiative 94	Explore sustainable financing mechanisms to build community infrastructure and ensure access to...	2023 - 2024	▼
	goal 5	strategy C	initiative 93	Evaluate meal program service design and sustainable financing mechanisms to enhance...	2023 - 2024	▼
	goal 5	strategy C	initiative 92	Expand the number of home-delivered and congregate meals provided to older adults using...	2023 - 2024	▼
	goal 5	strategy C	initiative 91	Increase the State Supplemental Payment (SSP) grant by 10.3 percent beginning January 1, 2023.	2023 - 2024	▼
	goal 5	strategy B	initiative 90	Conduct displaced worker analysis to understand the impact of job loss on older workers'...	2023 - 2024	▼

**Publicly accessible resource to monitor progress**

Search MPA Initiatives & Updates by Goal, Strategy, Topic, Agency/Dept. and more

**MPA Implementation Tracker**  
<https://www.mpaprogress.org/>

# MPA Stakeholder Committees Building Momentum & Delivering Results Together

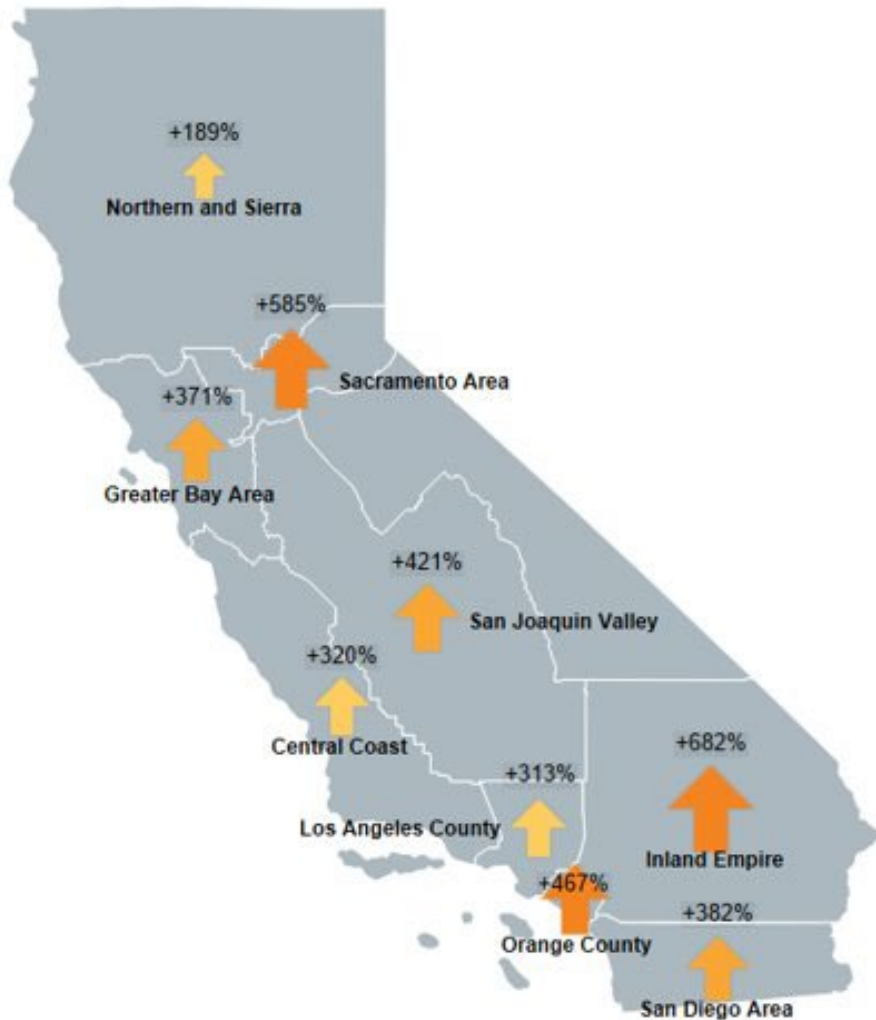


## Cross Agency Collaboration:

- CA Inter-Agency Council on Homelessness
- Behavioral Health Task Force

# Age 65+ Population Growth by Region 1980 - 2060

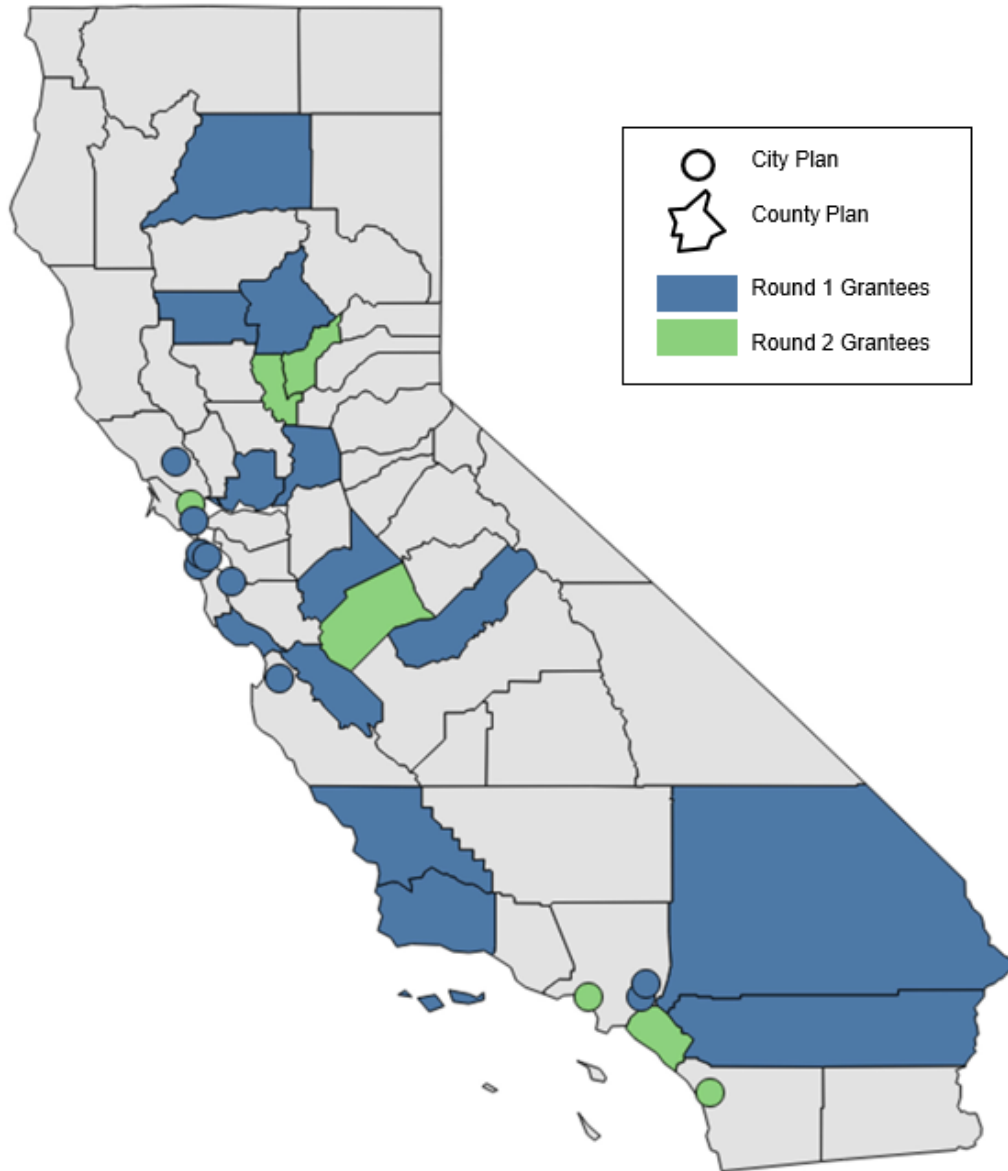
Age 65+ Population Growth by Region



Region	1980 Population Age 65+	2060 Population Age 65+	Percent Change
<b>Inland Empire</b>	<b>188,724</b>	<b>1,476,126</b>	<b>+682%</b>
Sacramento Area	106,426	728,994	+585%
Orange County	161,348	914,839	+467%
San Joaquin Valley	211,468	1,101,413	+421%
San Diego Area	200,662	967,858	+382%
Greater Bay Area	533,805	2,516,355	+371%
Central Coast	153,082	642,540	+320%
Los Angeles County	742,478	3,064,289	+313%
Northern and Sierra	121,071	350,083	+189%



# LADAP Grantees Across California



1. Agency on Aging, Area 4 (Sutter and Yuba)
2. Alliance on Aging (Salinas, Monterey Co.)
3. City of Azusa (Los Angeles Co.)
4. City of Santa Monica (Los Angeles Co.)
5. City of La Puente (Los Angeles Co.)
6. City of Vista (San Diego, Co.)
7. County of Orange Social Services Agency
8. Disability Action Center (Butte, Glenn, Shasta Co.)
9. Independent Living Resource Center (Santa Barbara)
- 10. Inland Caregiver Resource Center (Riverside & San Bernardino)**
11. Los Altos Mountain View Community (San Mateo County)
12. Madera County
13. Marin Aging & Disability Institute (San Anselmo & Novato, Marin Co.)
14. Merced County Human Services Agency
15. Sacramento County Dept. of Child, Family & Adult Services
16. San Luis Obispo County
17. Seniors Council of Santa Cruz & San Benito
18. Sonoma County Human Services Department, Area Agency on Aging
19. Solano County Older Adults & Disabled Adults Services
20. Stanislaus County Community Services Agency

# Thank You!

Contact:  
[Engage@aging.ca.gov](mailto:Engage@aging.ca.gov)



# Breakout rooms (7 mins)

Each group will be asked to type a collective response in the chat (choose someone from your group to do this).

## Education and Awareness

1. An overarching theme we found for all domains recommendations was communities have a lack of awareness of resources. **What can we as a coalition do to improve education and awareness in the community?**
2. Agencies working in silos contributes to client burnout when searching for resources and accessing services. **What can we do as a coalition to improve collaboration between agencies?**

## IE-MPA

3. The IE Master Plan for Aging will address the unique challenges of aging in the Inland Empire. There are a wide range of needs among older adults, adults with disabilities, and caregivers. **What can we do as a coalition to make sure the IE-MPA is age and disability friendly?**
4. **What can we do as a coalition to make sure the IE-MPA aligns with the cultural needs and values of our diverse community?**

# Awareness

---

## Janelle Doll

Special Projects Manager | Finest City  
Entertainment

---

# Marketing Overview



**Inland Coalition  
on Aging**

**Presented by**

FINEST CITY ENTERTAINMENT



# Process

- Working with Carmen to brand the Inland Coalition on Aging
- Creating marketing assets to bring awareness to the Coalition and the IE-MPA project
- Content and visuals that will resonate with the local community as well as industry professionals



# Website

- Website - InlandAging.org
  - Primary Goals
    - Learn who Inland Coalition on Aging is
    - Learn about the IE-MPA project
  - Two Conversions
    - Join the Coalition
    - Sign up for Updates



# Marketing Assets

What's been created?

- One page flyer (digital use) & Tri-fold brochure (print)
  - *Available at [inlandaging.org/media](https://inlandaging.org/media)*
- Social media toolkit
- Informational video (English)
  - *Available on YouTube*





# What's been created?

## What is a Master Plan for Aging?

A Master Plan for Aging is a blueprint for promoting healthy aging and supporting quality of life. The plan will allow local government, the private sector, and philanthropy to prepare for upcoming demographic changes in our older adult population. While California has a 10-year Statewide plan, the California Department of Aging recognized the importance of engaging communities to develop their own, locally-informed Master Plans for Aging.

Locally, the **Inland Empire Master Plan for Aging (IE-MPA)** will include recommendations for improvements to Housing, Transportation, Healthcare, Alzheimer's and all other Dementias, Behavioral Health & Social Support, and Caregiving.

### Who is the plan for?

The plan is for all Inland Empire residents, but focuses on optimizing health and wellness of older adults, adults with disabilities, and caregivers.



### What are the unique needs of older adults, adults with disabilities, and caregivers in the Inland Empire?

There are a wide range of needs amongst older adults, adults with disabilities, and caregivers in the Inland Empire. Overall, services and supports must be age and disability-friendly, aligning with the cultural needs and values of our diverse communities.

### What will the plan accomplish?

The IE-MPA will be designed to ensure older adults, adults with disabilities, and caregivers in the region can live with dignity, be engaged, feel safe, maintain good health and mobility, age in place, and have the ability to make choices.

### Who is the Inland Coalition on Aging?

The Inland Coalition on Aging (ICA) brings together diverse health care entities, community-based organizations, public officials, and stakeholders with the goal of better serving older adults, adults with disabilities, and caregivers in San Bernardino and Riverside Counties. **For more information, please visit [InlandAging.org/about](http://InlandAging.org/about)**



A Master Plan for Aging is a blueprint for promoting healthy aging and supporting quality of life. The plan will allow local government, the private sector, and philanthropy to prepare for upcoming demographic changes in our older adult population. While California has a 10-year Statewide plan, the California Department of Aging recognized the importance of engaging communities to develop their own, locally-informed Master Plans for Aging.

Locally, the **Inland Empire Master Plan for Aging (IE-MPA)** will include recommendations for improvements to Housing, Transportation, Healthcare, Alzheimer's and all other Dementias, Behavioral Health & Social Support, and Caregiving.

### Who is the plan for?

The plan is for all Inland Empire residents, but focuses on optimizing health and wellness of older adults, adults with disabilities, and caregivers.

### What are the unique needs of older adults, adults with disabilities, and caregivers in the Inland Empire?

There are a wide range of needs amongst older adults, adults with disabilities, and caregivers in the Inland Empire. Overall, services and supports must be age and disability-friendly, aligning with the cultural needs and values of our diverse communities.

### What will the plan accomplish?

The IE-MPA will be designed to ensure older adults, adults with disabilities, and caregivers in the region can live with dignity, be engaged, feel safe, maintain good health and mobility, age in place, and have the ability to make choices.

### Who is the Inland Coalition on Aging?

The Inland Coalition on Aging (ICA) brings together diverse health care entities, community-based organizations, public officials, and stakeholders with the goal of better serving older adults, adults with disabilities, and caregivers in San Bernardino and Riverside Counties. **For more information, please visit [InlandAging.org/about](http://InlandAging.org/about)**

Funding for the development of a local Master Plan for Aging has been provided by the SCAN Foundation and California Department of Aging.



## Learn More About the Inland Coalition on Aging's IE-MPA Today!

Keep up-to-date with our progress at: [InlandAging.org](http://InlandAging.org)

If you are an industry professional interested in joining the coalition visit: [InlandAging.org/about](http://InlandAging.org/about)

Sign up for updates at: [InlandAging.org/mpa](http://InlandAging.org/mpa)

We welcome your feedback! Email us at: [info@inlandaging.org](mailto:info@inlandaging.org)



Funding for the development of a local Master Plan for Aging has been provided by the SCAN Foundation and California Department of Aging.



## What is a Master Plan for Aging?



[InlandAging.org](http://InlandAging.org)

# 4 things we need for social support as we age



Intergenerational friendships



Transportation & Money for Social Activities



Spaces to Build Communities



Pets!



**Inland Empire's  
Master Plan  
for Aging**



# Marketing Assets

What's coming next?

- Informational video (Spanish) - *will be on website & YouTube*
- One page flyer & Tri-fold in Spanish - *will be on [inlandaging.org/media](http://inlandaging.org/media)*
- Website in Spanish - *will be [es.inlandaging.org](http://es.inlandaging.org)*
- Regular email updates to subscribers
- Additional assets, as requested!



# Sharing these assets

- We encourage you to share these assets on your platforms
  - On your organization's website
  - On your organization's social media
  - On your LinkedIn
  - Printed materials (tri-fold)



# Sharing these assets

- Goals:
  - Increase awareness
  - Build community support
  - Get support from leaders that will be crucial in implementing the IE-MPA once it is complete



Questions?



# Workgroups

## **Behavioral Health (2nd Wednesday of month 3pm-4pm)**

- Dr. Georgina Yoshioka, DSW, MBA LCSW, Director SB County Behavioral Health
- Tony Ortego, LMFT, Behavioral Health Services Administrator, Older Adult Integrated System of Care, Riverside University Health System - Behavioral Health

## **Transportation (2nd Wednesday of month 11am-12pm)**

Heather Menninger, President AMMA Transit Planning Inc.

## **Caregiving & Alzheimer's and all other Dementias (2nd Wednesday of month 9am-10am)**

- Susan Howland, MSG, Senior Director of Programs, Alzheimer's Association Southland
- Carmen Estrada, Executive Director, Inland Caregiver Resource Center

## **Housing (4th Wednesday of month 2PM - 3PM)**

- Tanya Torno, MSW Deputy Director, Continuum of Care, Housing and Workforce Solutions
- Dr. Ben Jauregui, DSW Manager, Integrated Transitional Care UM - Transition of Care Inland Empire Health Plan

Anyone interested in joining a work group, email us at [info@inlandaging.org](mailto:info@inlandaging.org)



# Next Meeting

AARP Presentation: AARP's  
Network of Age Friendly  
States and Communities

**Tuesday**

**March 26, 2024**

**11:00 am - 12:00 pm**

**Presentation from Rafi Nazarians,  
Advocacy Director, AARP California**



**Inland Coalition  
on Aging**



**Inland Coalition  
on Aging**

**Remember to complete the post-meeting poll to let us  
know how we did.**

**Thank You!**

For more information, please visit: [Inlandaging.org](https://www.inlandaging.org)